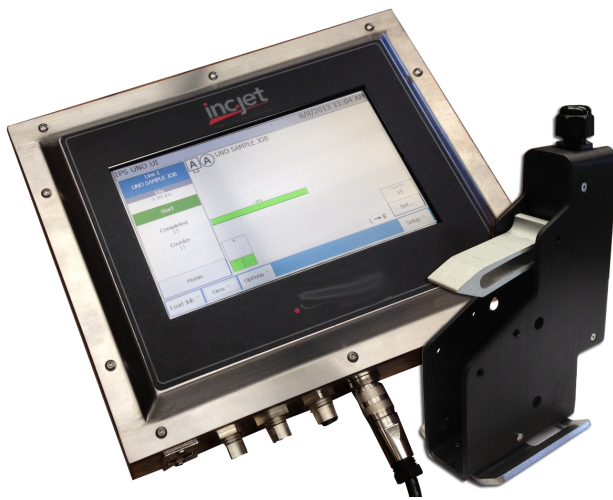


.uno  
by inc.jet



## 1/2" all-in-one print solution



## Inks

options to suit every need

Whether printing on matte stocks or glossy finishes, inc.jet provides inks that dry quickly, are water resistant, and adhere to the most difficult substances. From papers to plastics, inc.jet has the ink solution for you.

## High Resolution Printing

proven and dependable performance

The 1/2" .UNO all-in-one print head and screen give you a simple, yet incredibly powerful way to print up to 1/2" of print with the minimum of effort. The system, comprising of a 7" screen and attached print head allows you to be up and running within minutes.

Using inc.jet's proven and highly reliable print solutions based on HP technology, the .UNO is the ideal product for serialization, barcodes and human readable printing.

- No mess, no maintenance HP and inc.jet Technology
- Rugged industrial design for the most demanding installations
- Variable and fixed data capability
- SQL Database connectivity
- Simple ASCII interface to supply dynamic data from scanners and PLC's
- Offline job creation
- Networkable—can be connected to company network



## Lifetime Warranty

for your peace of mind



inc.jet provides a Lifetime Warranty for its IPS hardware products and warrants that each product is to be in good working order for the product's lifecycle whether purchased from inc.jet or an authorized inc.jet business partner.

Should the product fail to be in good working order, inc.jet will repair or replace this product at no charge,

# All Inclusive Solutions

for your peace of mind

inc.jet's .UNO heads are manufactured from an aluminum casing with an all metal design for maximum durability. With an industrial touch screen for its User Interface, it will stand up well in any environment

The .UNO has connections for encoders and sensor as well as an Ethernet port for connecting to external data sources and networks. It comes complete with:

- 1/2" Print Head
- 7" Touch Screen(with Design and Management software)
- Power supply
- Connection cables
- VESA pivot mount

Additional equipment that connects directly to the .UNO systems includes

- Sensor
- Encoder
- Fixed pen mounting Kit
- Hand Held Barcode Scanner for message selection
- Bulk Ink Regulator and Ink Holder with Empty Detect

External Connectivity includes:

- External I/O
- Serial Port (RS 232)
- USB
- Ethernet

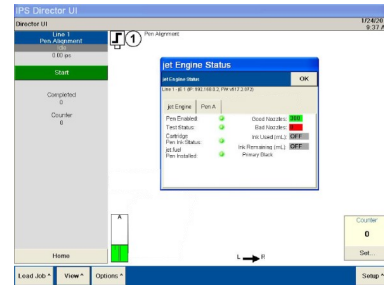
# Print Specifications

| Print Resolution      |                            |          |
|-----------------------|----------------------------|----------|
| 600 dpi x 300 dpi     | 250 feet per minute        |          |
| 300 dpi x 300 dpi     | 500 feet per minute        |          |
| Print Density         | User configurable          |          |
| Printable Items       |                            |          |
| Barcode Capability    | Static:                    | 87 Types |
|                       | Dynamic                    | 9 Types  |
| Other Printable Items | Lot Codes                  |          |
|                       | Date/Expiry Date           |          |
|                       | Shift Codes                |          |
|                       | Foreign Languages          |          |
|                       | Bitmaps/Logos              |          |
|                       | Fixed Text                 |          |
|                       | User Inserts               |          |
|                       | Counters and Batch Numbers |          |

# Sophisticated Control

advanced design and management software

Director software runs on the User Interface and provides printer configuration, control and monitoring. The interface allows the user to monitor a wide variety of operating conditions, including job types and counts and even ink usage, all in real-time.



IPS Director—Manage and Load Jobs

Producer separates template creation and control from day to day printing processes. Operating on any computer running Windows, it permits the creation of print templates that can be exported into the User Interface via an Ethernet connection or by using a USB thumb drive.



IPS Producer—Design Print Templates